

2026年度
入学試験問題集

2026
Admission Test Questions

2026 年度一般入試学力評価試験（数学）における問題作成の方針と出題のねらい

本試験では、日本の中学校で学習する基礎的・基本的な数学の知識と計算力が身に付いているかを確認します。そのため幅広い分野から計算問題を中心に、教科書の例題や練習問題の類似問題を多く出題しています。

以下の設問でそれぞれの分野に関する基礎的・基本的な知識と計算力が身についているかを確認します。

- | | | | | | | | |
|---|---------------------------|---|------|---|-----|---|--------|
| 1 | 数と式 | 2 | 因数分解 | 3 | 方程式 | | |
| 4 | 確率 | 5 | 関数 | 6 | 図形 | 7 | 三平方の定理 |
| 8 | 一次関数及び 2 乗に比例する関数とそれらのグラフ | | | | | | |

Policy and Intentions for the 2026 Entrance Examination (Mathematics)

The purpose of this test is to assess whether students have acquired the fundamental mathematical knowledge and calculation skills taught in Japanese junior high schools. To this end, the test will consist primarily of calculation problems drawn from a wide range of topics, with many questions modeled after examples and exercises found in textbooks.

The following questions are designed to assess whether students have acquired the fundamental knowledge and calculation skills required in each subject area.

- | | | | | | |
|---|---|---|-----------|---|-----------|
| 1 | Numbers and Expressions | 2 | Factoring | 3 | Equations |
| 4 | Probability | 5 | Functions | 6 | Geometry |
| 7 | The Pythagorean Theorem | | | | |
| 8 | Linear Functions, Functions Proportional to the Square and Their Graphs | | | | |

2026年度一般入試学力評価試験（英語）における問題作成の方針と出題のねらい

本試験は、日本の中学校で学習した内容に基づいており、入学予定者の英語能力を、文法、会話、読解（内容理解）といった観点から評価することを目的としています。読解問題では、一般的な話題に加え、STEM分野に関連する学術的な内容も扱います。総合的には、これまでの学校教育で求められる言語知識および技能を十分に習得しているかを判断することを目的としています。

設問1

設問1は、日常的な場面で使われる基本的な英語表現に加え、工学分野や学術的な場面で必要とされる語彙の運用能力、および英語文法の基礎的理解を評価することを目的としています。特に、自然な語の組み合わせ（コロケーション）を理解する力や、文脈に応じて文法的に適切な語句を選択する能力を評価します。

設問2

設問2は、日常および学術的な場面で用いられる会話英語の理解力を評価します。語彙や文法（文構造や統語を含む）に関する知識に加え、文脈の手がかりを活用して適切な語句を選択する能力を測定します。

設問3/4

設問3及び4は、英語の読解力、文法構造の理解、そして学術的な文章における文脈把握力を評価することを目的としています。一般的な英語力に加え、STEM分野に関連するアカデミックな言語運用能力を測定する機会を提供します。

各セクションは内容および分量が異なりますが、受験者は自身の語学力、文脈理解力、そして批判的思考力を活用し、それぞれの文章を完成させるために最も適切な語彙、語形、および機能語を選択する必要があります。

Policy and Intentions for the 2026 Entrance Examination (English)

Questions are based on the content studied in Japanese Junior High School. The aim is to assess incoming students' proficiency levels in the following areas: grammar, dialogue, reading, (content comprehension). The reading sections cover a general topic and an academic topic in STEM. Overall, the assessment aims to determine whether candidates have sufficiently mastered the language knowledge and skills expected from prior schooling.

Section 1

These questions are designed to assess not only basic English expressions used in everyday contexts, but also the ability to use vocabulary required in engineering fields and academic settings, as well as a fundamental understanding of English grammar. In particular, they aim to evaluate the ability to understand natural word combinations (collocations) and to select grammatically appropriate words and phrases according to the context.

Section 2

This section assesses students' understanding of conversational English used in both everyday and academic contexts. It focuses on their knowledge of vocabulary and grammar, including sentence structure and syntax. It also evaluates their ability to use contextual clues to choose the correct words or phrases.

Section 3/4

These two sections are designed to assess reading comprehension, understanding of grammatical structures, and context clues in academic English texts. They provide opportunity for assessment of general English and STEM-related, academic language proficiency. However, the content and length of each section differ. Students must use their language skills, contextual understanding, and critical thinking to choose the most appropriate vocabulary, word forms, and function words to complete each text.

2026年度入学試験問題

学力評価試験（数学）

2026 Admission Test Questions

Academic ability evaluation (Mathematics)

1 次の問いに答えよ.

Answer the following questions.

(1) $\frac{2}{3} - 2^2 \times \frac{5}{8}$ を計算しなさい.

Calculate the value of $\frac{2}{3} - 2^2 \times \frac{5}{8}$

(2) $-\frac{3x-2y}{2} + \frac{2x-5y}{3}$ を計算しなさい.

Simplify the expression $-\frac{3x-2y}{2} + \frac{2x-5y}{3}$

(3) $4ab^3 \times 3a^2b \div (-6ab)^2$ を計算しなさい.

Simplify the expression $4ab^3 \times 3a^2b \div (-6ab)^2$

(4) $\sqrt{98} + \sqrt{63} - 2\sqrt{18} + \sqrt{112}$ を計算しなさい.

Calculate the value of $\sqrt{98} + \sqrt{63} - 2\sqrt{18} + \sqrt{112}$

- (5) $\sqrt{120} \times \sqrt{42}$ を計算しなさい。
Calculate the value of $\sqrt{120} \times \sqrt{42}$

- (6) $\frac{6}{\sqrt{12}}$ の分母を有理化しなさい。

Simplify the expression $\frac{6}{\sqrt{12}}$ such that the denominator contains no root.

- (7) 数 $-\frac{10}{3}$, -4 , -3.5 を不等号を使って並べなさい。

Use inequality signs to arrange the numbers $-\frac{10}{3}$, -4 , -3.5

- (8) 数 $3, 2\sqrt{2}, \sqrt{13}$ を不等号を使って並べなさい。

Use inequality signs to arrange the numbers $3, 2\sqrt{2}, \sqrt{13}$.

- (9) 底面の1辺が a cm, 高さが h cm の正四角すいの体積が V cm³ であるとき、 a を h , V を用いて表しなさい。

A regular quadrangular pyramid has a base with a side length of a cm, a height of h cm, and a volume of V cm³. Express the value of a in terms of h and V .

- (10) $(a+4)^2 - (2a+1)(3a-2)$ を計算しなさい。

Simplify the expression $(a+4)^2 - (2a+1)(3a-2)$

- (11) $A=3x-y$, $B=-2x+3y$ のとき, $-(A-2B)+2(3A+B)$ を計算し, x と y で表しなさい。

If $A=3x-y$ and $B=-2x+3y$, express $-(A-2B)+2(3A+B)$ in terms of x and y .

2 次の式を因数分解しなさい。

Factorize the following expressions.

(1) $6a^3b^3 + 8a^3b - 10a^2b^3$

(2) $x^2 - 3x - 18$

(3) $9x^2 + 6xy + y^2$

(4) $(x+5)^2 - 5(x+5) - 14$

3 次の方程式を解きなさい。

Find the unknown variables in each of the following equations.

(1) $\frac{4}{3}x + 3 = \frac{2}{5}x - 7$

(2) $6:7 = 8:x$

(3)
$$\begin{cases} 4x - 3y = -17 \\ -3x + 2y = 12 \end{cases}$$

(4) $x^2 - 7x - 8 = 0$

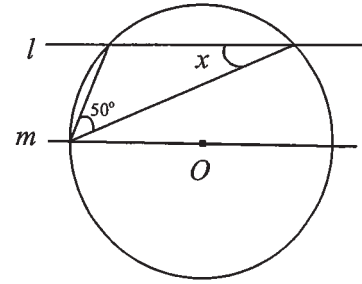
(5) $x^2 + 10x + 7 = 0$

- 4 2個サイコロを同時に投げる。出た目の積が素数になる確率を求めなさい。
If two ordinary dice are thrown at the same time, what is the probability that the product of the dice's values becomes a prime number?

- 5 y は x に比例し、 $x=12$ に対応する y の値が $y=10$ である。 x の変域が $-4 < x < -2$ であるとき、 y の変域を求めなさい。
Suppose y is proportional to x such that when $x=12$, $y=10$. If the range of x is $-4 < x < -2$, find the range of values that y can take.

- 6 右の図の $\angle x$ の大きさを求めなさい。ただし、 O は円の中心、直線 l と m は平行とする。

Find $\angle x$ in the figure to the right, where O is the center of the circle, the straight lines l and m are parallel.



- 7 2点 $A(2, -3)$, $B(-4, 7)$ の間の距離を求めなさい。

Find the distance between two points $A(2, -3)$ and $B(-4, 7)$.

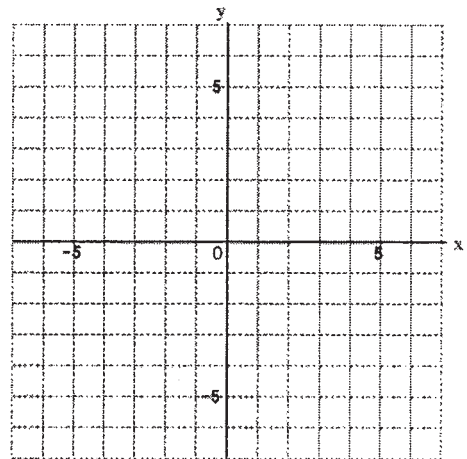
8 次の問いに答えなさい。

Answer the following questions.

(1) 1次関数 $y = -\frac{3}{5}x + 2$ のグラフをかきなさい。

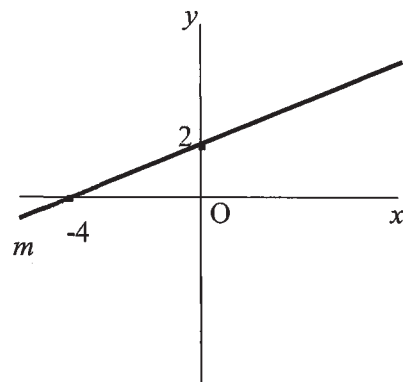
Sketch the graph of the linear function

$$y = -\frac{3}{5}x + 2.$$



(2) 右の図の直線 m の式を求めなさい。

Find the equation of the line “ m ” in the figure to the right.



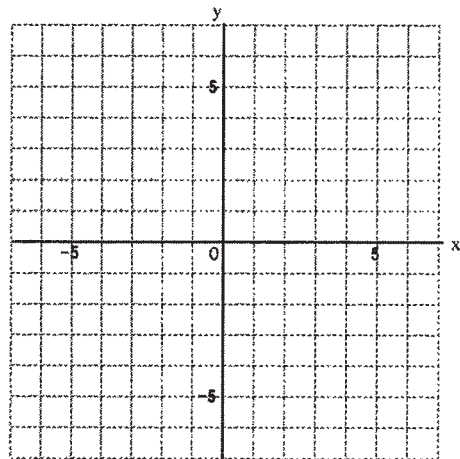
(3) 傾きが $\frac{4}{3}$ で、点 $(5, 9)$ を通る直線の式を求めなさい。

Find the equation of line whose slope is $\frac{4}{3}$ and which passes through the point

$(5, 9)$.

(4) 関数 $y = \frac{2}{3}x^2$ のグラフをかきなさい。

Sketch the graph of the function $y = \frac{2}{3}x^2$.



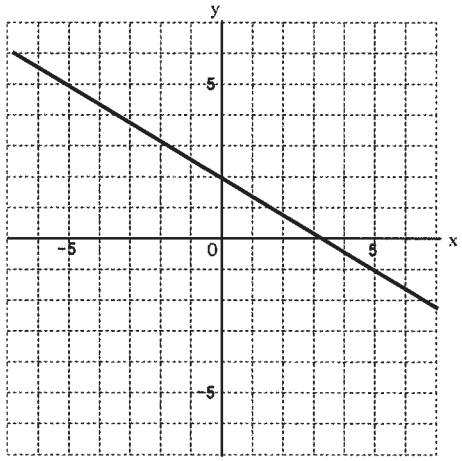
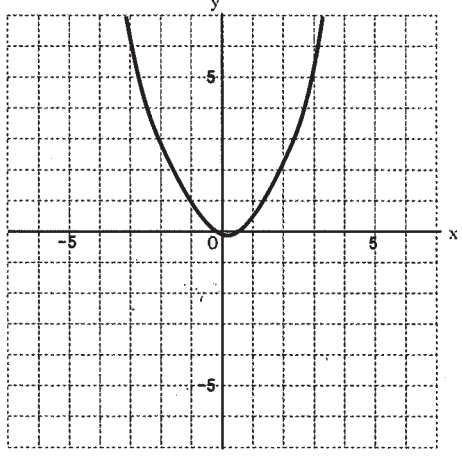
(5) 関数 $y = -\frac{7}{2}x^2$ について、 x の変域が $-1 \leq x \leq 4$ のときの y の変域を求めなさい。

For the function $y = -\frac{7}{2}x^2$, find the range of values for y if the range of x is $-1 \leq x \leq 4$.

解答用紙 Answer Sheet

(1/2)

<p>1</p> <p>3 points</p>	(1) $-\frac{11}{6}$	(2) $\frac{-5x-4y}{6}$
	(3) $\frac{ab^2}{3}$	(4) $\sqrt{2}+7\sqrt{7}$
	(5) $12\sqrt{35}$	(6) $\sqrt{3}$
	(7) $-4 < -3.5 < -\frac{10}{3}$	(8) $2\sqrt{2} < 3 < \sqrt{13}$
	(9) $a = \frac{\sqrt{3vh}}{h}$	(10) $-5a^2 + 9a + 18$
	(11) $7x + 7y$	
<p>2</p> <p>4 points</p>	(1) $2a^2b(3ab^2 + 4a - 5b^2)$	(2) $(x-6)(x+3)$
	(3) $(3x+y)^2$	(4) $(x-2)(x+7)$
<p>3</p> <p>3 points</p>	(1) $x = -\frac{75}{7}$	(2) $x = \frac{28}{3}$
	(3) $x = -2, y = 3$	(4) $x = 8, -1$
	(5) $x = -5 \pm 3\sqrt{2}$	
<p>4</p> <p>4 points</p>	$\frac{1}{6}$	
<p>5</p> <p>4 points</p>	$-\frac{10}{3} < y < -\frac{5}{3}$	

<p>6 4 points</p>	<p>20°</p>	
<p>7 4 points</p>	<p>$2\sqrt{34}$</p>	
<p>8 4 points</p>	<p>(1)</p> 	<p>(2)</p> $y = \frac{1}{2}x + 2$
	<p>(4)</p> 	<p>(3)</p> $y = \frac{4}{3}x + \frac{7}{3}$ <p>(5)</p> $-56 \leq y \leq 0$

2026年度入学試験問題

学力評価試験（英語）

2026 Admission Test Questions

Academic ability evaluation (English)

I. 次の文の(1)～(8)に入る最も適切な表現を(a)～(d)から1つずつ選び、その記号を書きなさい。

Choose the most appropriate answer for each blank (1)～(8) from (a)～(d) and write the letter on the answer sheet.

(1) A new type of environmentally friendly vehicle (1) by a team of engineering students.

(a) develop (b) develops (c) has developed (d) was developed

(2) The heavy snow (2) the traffic on the highway for several hours.

(a) affected (b) made (c) played (d) took

(3) The first period class starts (3) 8:40, but some students are often late.

(a) at (b) in (c) on (d) to

(4) The Chemistry teacher (4) the materials for an experiment when the bell rang.

(a) is preparing (b) prepares (c) was prepared (d) was preparing

(5) After a few hours of hard work, the programmer finally (5) the solution to the problem.

(a) came up with (b) got along with (c) ran out of (d) took out of

(6) You should (6) more assignments on time if you wanted a higher grade.

(a) be submitted (b) have submitted (c) submit (d) submitted

(7) Using a bicycle is (7) using an electric scooter, and it is good for the environment.

(a) as fast as (b) as fast than (c) faster (d) fastest

(8) The cram school that students attend in the summer (8) both English and Engineering.

(a) am offering (b) is offered (c) offer (d) offers

II. 次の会話文の(1)～(6)に入る最も適切な表現を(a)～(j)から1つずつ選び、その記号を書きなさい。

Choose the most appropriate expression for each blank (1)～(6) from (a)～(j) and write the letter on the answer sheet.

Staff: Do you have any questions about student life at this school?

Visitor: Yes. What extracurricular activities do you offer?

Staff: We have a variety of optional clubs and activities for students with different interests. The most popular is the robot club.

Visitor: (1). They build a robot for a competition, right?

Staff: That's right. (2). They spend months planning, building, and testing their robots as a group.

Visitor: Do the students do all the work?

Staff: Mostly, yes, but teachers are available to help if the students need them.

Visitor: That's good. (3)? Are there any physical activities for students apart from PE class?

Staff: Yes, we have a badminton club and a volleyball team.

Visitor: (4)?

Staff: The badminton club meets on Mondays, Wednesdays, and Fridays. Volleyball is on Tuesdays and Thursdays.

Visitor: I see. Who's in charge of them?

Staff: (5).

Visitor: Okay. Also, my daughter plays guitar. Is there anywhere she can do that at your school?

Staff: Yes, we have a music studio. Every year students who play instruments get together to form a band. They perform at the school festival at the end of the year. (6)!

- | | |
|-----------------------------------|--|
| (a) All students must participate | (b) Both clubs are free of charge |
| (c) How often do they practice | (d) It's a great show to watch |
| (e) I've heard about that | (f) Students from different grades work together |
| (g) Students work alone | (h) The PE teacher coaches them |
| (i) What about sports | (j) Where do they play |

III. 次の(1)～(8)に入る最も適切な語を(a)～(h)の中から選び、その記号を書きなさい。

Choose the most appropriate word for each blank (1)～(8) from (a)～(h) and write the letter on the answer sheet.

Compost

Many people know that recycling plastic is one way to help the environment, but did you know that you can also recycle your leftover food? Plastic bottles can be transformed into something new and they can be used again. In a similar way, we can (1) food scraps and other organic materials, such as paper, together, and turn them into something different—compost! Compost is used as a food for plants in farms and gardens. It is a great way to feed your flowers and vegetables the (2) vitamins and minerals that they need to grow.

Composting takes time, but it is very easy. First, prepare a container. Compost can be very (3), so it is a good idea to choose a container or bin that can keep the smells inside. Second, collect fruit and vegetable peels, egg shells, and coffee grounds to put in the bin. You can also add (4), grass, and sticks from around the garden or indoor plants. You should (5) putting used tissues, napkins, meat, fish, dairy, and other foods cooked in oil (6) the compost. Third, put in small pieces of paper or cardboard waste. Optionally, you can also add a layer of composting powder, which has enzymes and good bacteria, to help the process begin. Over time, as you continue to add more (7) and combine them into the container, everything will (8) down into smaller parts. Eventually, it will start to turn dark brown and it will no longer smell bad. Then it is time to recycle it back to your garden as food for your plants.

- | | | | |
|------------|---------------|-------------|------------|
| (a) avoid | (b) break | (c) healthy | (d) into |
| (e) leaves | (f) materials | (g) mix | (h) stinky |

IV. 次の(1)～(12)に入る最も適切な語を(a)～(n)の中から選び、その記号を書きなさい。
ただし、必要のない単語が2語含まれています。

Choose the most appropriate word for each blank (1)～(12) from (a)～(n) and write the letter on the answer sheet. Note that two unused words are included in the choices.

The Stink Bug (Kamemushi)

Stink bugs (Kamemushi) are often seen in many parts of the world, including Japan. They are brown or green (1) color. Stink bugs are not dangerous; however, they are (2) for their strong smell. That is why they are called “stink bugs.” Although many people dislike stink bugs, their smell is their superpower. That smell helps to protect them from birds and other animals.

Stink bugs often (3) on fruit and vegetables. They use their mouths to get juice from plants. Farmers often worry about stink bugs because when they feed, they can cause a lot of (4) to crops such as apples, peaches, and tomatoes. Sometimes the fruit and vegetables can still be eaten by people, but they look bad and cannot be sold in supermarkets. That means farmers (5) money.

Stink bugs love safety and warmth in homes, but humans do not want them (6). In autumn, stink bugs try to enter homes where the temperature is not cold. They hide in spaces like windows, walls, and closets. If you find them in your home, try not to (7) or crush them. It is not easy to get the smell of stink bugs off your fingers! It is a good idea to use a paper towel to remove them (8) and put them outside.

Living with stink bugs is not a comfortable experience. To stop stink bugs from entering the house, people use window screens. They also cover small spaces (9) their doors. Farmers sometimes use traps or natural ways to (10) them. Scientists are also studying stink bugs to find better ways to manage them.

Stink bugs do not bite or sting, (11) their smell can be very strong. Learning about them can help us (12) our homes and farms better.

(a) but	(b) control	(c) damage	(d) feed
(e) gently	(f) give	(g) hardly	(h) in
(i) inside	(j) known	(k) lose	(l) protect
(m) touch	(n) under		

解答用紙 Answer Sheet

I.

(1)	d	(2)	a	(3)	a	(4)	d	(5)	a
(6)	b	(7)	a	(8)	d				

/ 24 (3pts x 8)

II.

(1)	e	(2)	f	(3)	i	(4)	c	(5)	h
(6)	d								

/ 18 (3pts x 6)

III.

(1)	g	(2)	c	(3)	h	(4)	e	(5)	a
(6)	d	(7)	f	(8)	b				

/ 24 (3pts x 8)

IV.

(1)	h	(2)	j	(3)	d	(4)	c	(5)	k
(6)	i	(7)	m	(8)	e	(9)	n	(10)	b
(11)	a	(12)	l						

/ 30 (3pts x 10) (1)-(10)

/ 4 (2pts x 2) (11)-(12)

